

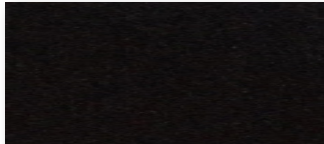
e-Panel Colours

Axis/Anvil Dividers

Spectrum Red



Pure Black

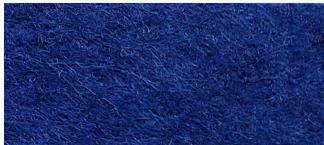


Agile Dividers

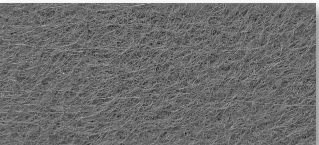
Spectrum Red



Bright Blue



Deep Grey

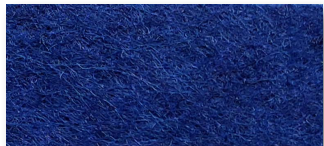


Quiet Spaces

Spectrum Red



Bright Blue



Silver Grey



Charcoal Grey



Yellow



Sweet Orange



Grass Green



e-Panel Technical Data

E-PANEL	DESCRIPTION
Composition of Materials	45% posted industrial polyester and 55% melted fibre
Fusion Point	255-260°C
High Heat Distortion Temperature	135°C
Ultimate Elongation	25-40%
Full Panel Size	1220 x 2440mm (+/- 2.5)
Standard Panel Thickness	9mm (can be customised from 5 - 15mm)
Full Panel Weight	6kg (9mm thickness panel)
Stiffness (Facade Testing)	65 - 70 (Shore Durometer)
NRC (Noise Reduction Co-efficient)	0.75 with 100mm cavity 0.65 with 50mm cavity (ISO354-2006)

e-Panel Benefits

SPECS		BENEFITS
3D crimp staple fiber and recycled PET	✓	Made from 100% polyester
Melted PET filaments joined together	✓	No glue and adhesive
Combed filament and needle punched	✓	Structurally rigid
Colour injected into filament	✓	Long colour duration
Low water permeability and moisture absorption	✓	Water resistant
Horizontal and vertical fibers woven together	✓	Impact resistant
ASTM E84 testing for 43	✓	Fire retardant
NRC ratings 0.8 with cavity	✓	Great acoustic performance
Non toxic, no odour and low VOC	✓	Formaldehyde free
No risk of skin irritation or respiratory problems	✓	Great for healthy environments
Pin-able facade finishing	✓	Versatile surface
Heat treated up to 200 degrees	✓	Bacteria and fungi resistant
Stable PET material and panel structure	✓	10 Year durability guarantee
Low-carbon and environmentally friendly	✓	Recycled and recyclable